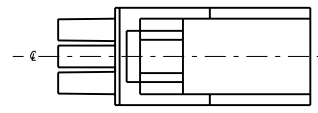
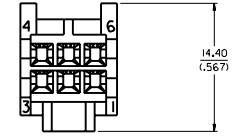
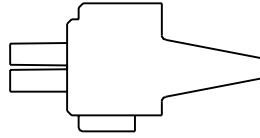
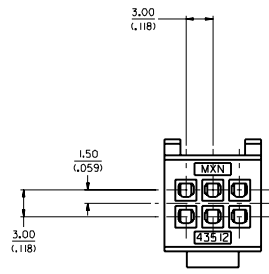
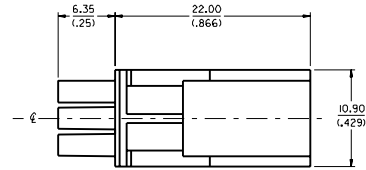


NOTES:

1. MATERIAL: POLYESTER (PBT), UN-FILLED, UL 94V-0. COLOR: BLACK
2. FINISH: NONE
3. PRODUCT SPEC. : PS-435 IO-002
4. ALL DIMENSIONS SHOWN FOR REFERENCE ONLY.
5. USES STANDARD 43030 MICRO-FIT FEMALE CRIMP TERMINALS.
7. PART MATES WITH 43515-0001 PLUG POD.
8. PART TO BE USED WITH 43838-0*** RECEPTACLE SHROUD.
(SEE SHROUD DRAWING FOR ASSEMBLY INFORMATION)



MOVED LETTERING EC NO. LCR 1959-10594 DRWING POL GAR 99032711 CHK: COMERC 99032715 APPR: COMERC 1 99032715	QUALITY SYMBOLS	GENERAL TOLERANCES: (UNLESS SPECIFIED)	SCALE: 4:1	DESIGN UNITS: <input checked="" type="checkbox"/> mm <input type="checkbox"/> INCH	DIMENSIONS: <input checked="" type="checkbox"/> mm <input type="checkbox"/> INCH <input type="checkbox"/> mm ONLY	SHT 1	REV	
	MAJOR	4 PLACES ±0.--- ±.---	DRAWN BY & DATE: COMERC 97/10/06	THIRD ANGLE PROJECTION	TITLE: MICRO-FIT RECEPTACLE 6 CIRCUIT, DUAL ROW COMPODRE SYSTEM	REVISE ON CAD ONLY		
	CRITICAL	3 PLACES ±0.--- ±.---	CHECKED BY & DATE: COMERC 97/10/06					
	MINOR	2 PLACES ±0.--- ±.---	APPROVED BY & DATE: FRY 97/10/10					
REV	1 PLACE ±0.--- ±.---	ANGULAR: ± 0	CAD FILENAME: S4351201.DGN		MATERIAL NO. 43512-0001		SHEET NO. 1 OF 1	
		DRAFT WHERE APPLICABLE MUST REMAIN WITHIN DIMENSIONS	THIS DRAWING CONTAINS INFORMATION THAT IS PROPRIETARY TO MOLEX INCORPORATED AND SHOULD NOT BE USED WITHOUT WRITTEN PERMISSION.					SIZE D